



Din-Rail Type

Wall/Table Top

INDUSTRIAL

RS485 MODBUS and 4- 20mA output

COLD STORAGES

Temperature, Humidity and Co2 Levels

ENERGY & HYDRO

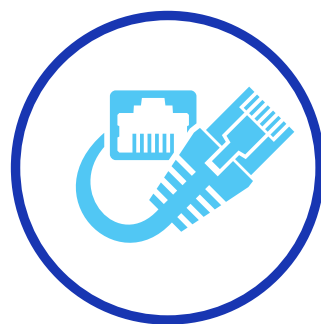
Water Level, Pressure, Temperature, Energy Meters



Cellular
(GSM, 4G-LTE)



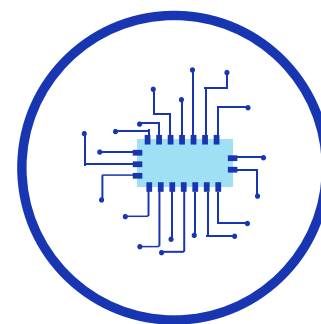
Wi-Fi



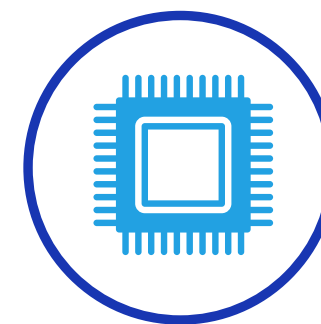
Ethernet



Storage



Modbus/Analog



RTC



OTA

Technical Specifications

- **Connectivity:** GSM/GPRS (4G) LTE, Wi-Fi, Ethernet
- **Data Logging:** Min 1 min, Max: Custom per reading Transmission
- **Interface(s):** 1 x RS485, 1 x Rs232, 4 x 4-20mA ($\pm 1\%$ FS)
- **Voltage:** 12-24 VDC or 220-230V AC
- **Protection:** Surge protection, Over Voltage and Reverse Polarity Protection
- **Operating Temperature:** -40°C to $+70^{\circ}\text{C}$
- **Isolation:** ModBus Upto 15KV | Ethernet Upto 2KV
- **LED Indicators:** 1x Power Status, 1 x Modbus , 1 x Network
- **Enclosures:** DIN Rail | Wall or Table Top (IP 65)
- **Certifications Compliant:** CE, FCC, RoHS