



INDUSTRIAL

RS-485 MODBUS and 4 - 20mA Analog

COLD STORAGE

Temperature, Humidity and Co2 Levels

ENERGY & HYDRO

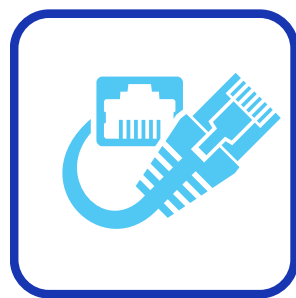
Water Level, Pressure, Temperature, Energy Meters



Cellular
(GSM,4G-LTE)



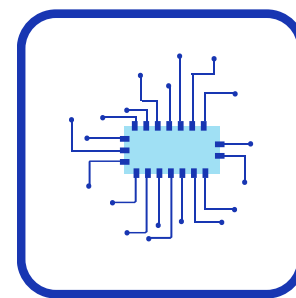
FTP



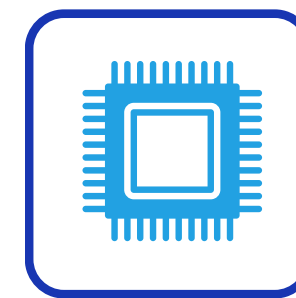
Ethernet



Storage



Modbus/Analog



RTC



OTA

Technical Specifications

- **Connectivity:** 4G-LTE, Ethernet, Wi-Fi(opt), BLE(opt)
- **Data Logging:** Min 1 min, Max: Custom
- **Interface(s):** 1 x RS485(2-wire), 1 x RS232(opt), 4/8 ch x 4-20mA ($\pm 1\%$ FS)
- **Voltage:** 12-24V DC or 220-230V AC (opt)
- **Protection:** O/P: Surge protection, I/P: Over Voltage and Reverse Polarity Protection
- **Operating Temperature:** -40°C to +70°C
- **Isolation:** Modbus Up to 3KV | Ethernet Up to 2KV
- **LED Indicators:** 1x Power, 1x Modbus , 1x Network, 1x Cloud
- **Enclosure:** DIN Rail, Wall/Table Top (opt)
- **Certifications Compliance:** Meet CE, FCC, RoHS standards
- **Dimensions:** 105 x 90 x 66 mm